



WM-DSP

Active DSP Wedge Monitor

WM-DSP series is Audiocenter's latest active DSP controlled wedge monitor speaker with high-output, reliability and supreme performance.

WM-DSP series is perfectly integrated with BrainCore™ technology, with its advanced technology and scientific methodology, BrainCore™ analyses and processes the input signal, DSP module, Class D amplifier and loudspeaker optimally, achieving smooth transitions between the LF and HF, excellent frequency response and audio reproduction even at high levels of SPL.

The wave guide of WM-DSP series provides a perfect coverage angle of 60° x 40° (Live band), 60° x 60° (Stage), which can achieve symmetrical sound field coverage of large and medium-sized shows and live bands. WM-DSP series can fulfill the requirements of artists with excellent performance and high audio reproduction.

Two models are available for WM-DSP series, which are WM210-DSP dual 10" Active monitor speaker and WM212-DSP dual 12" Active monitor speaker. WM-DSP series is specially designed for touring performance and fixed installation like Live sound reinforcement floor monitor, Touring systems, Clubs, Auditoriums, Theatres and Houses of Worship.

KEY FEATURES



Innovative BrainCore™ technology to improve the audio performance of the system

The innovative BrainCore™ technology and built-in powerful DSP processor improve the performance of the speaker. With Cort™ correction technology and Limita™ processing technology, the system works with safety and reliability and achieves supreme performance.



Class D Amplifier from PASCAL

WM-DSP adopts customized Class D Amplifier from PASCAL together with switch mode power technology, which ensure the system for high efficiency, exquisite and compact outlook, advanced cooling effect and high quality.



Advanced Cooling System

Moulded large heatsink improves the cooling efficiency, with the result of higher reliability of the system.



Asymmetrical Wave Guide

Asymmetrical wave guide makes the penetration of HF stronger, and gets cleaner and clearer sound.



Customized ProDriver

Latest ferrite speaker technology and customized driver from Beyma ensure very clean and clear sound and impressive sound dynamic.



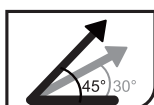
Active Speaker DSP

3 different presets: FLAT, VAOCAL, DRUM, users can choose the preset according to their needs via the switch on the back panel.



Automatic Standby 15mins

To save power, the system will enter into standby mode automatically if without signal input for 15mins.



The vertical adjustable angle for cabinet is from 30° to 45° (30°, 35°, 40°, 45°, every 5° adjustable)



Front loaded cabinet design

Front loaded cabinet design lowers the limit of low frequency. The cabinet is very small and compact but can reach very high SPL.



Customized and molded handle with ergonomic design for easy usage

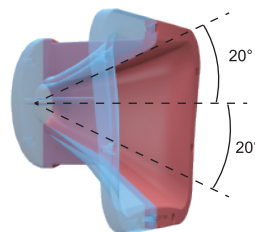


Solid Wood Construction

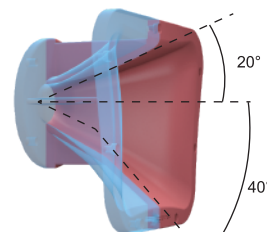
Optimized and compact CNC cabinet made of Russian birch plywood is solid and very suitable for touring application.



- The wave guide of WM-DSP series provides a perfect coverage angle of 60° x 40° (Live band), 60° x 60° (Stage)

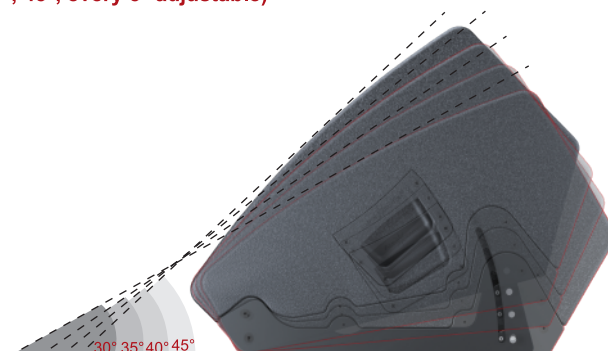
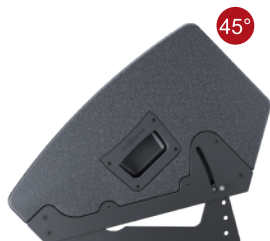
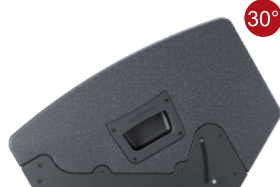


Live band Wedge Monitor

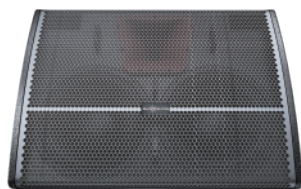


Stage Wedge Monitor

- The vertical adjustable angle for cabinet is from 30° to 45° (30°, 35°, 40°, 45°, every 5° adjustable)

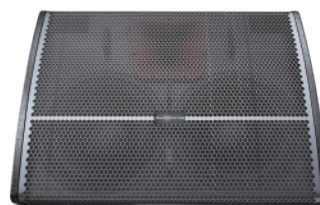


SPECIFICATION



WM210-DSP

Frequency Response (-6dB anechoic chamber)	55Hz-20KHz
Maximum Calculated SPL/1M	132dB
LF Driver	Customized Audiocenter ferrite driver, 2.5"voice coil
HF Driver	Customized Beyma ferrite driver, 1.4"exit, 3"voice coil
Coverage Angle (Symmetrical)	60° x 40° (Live band), 60° x 60° (Stage)
AMPLIFIER	Class D
Amplifier Circuitry	1600W
Power (RMS)	20Hz-20KHz(±0.5dB)
Frequency Response	DC protection, short circuit protection, overheat protection, input overload protection, output overload protection, soft startup protection, overvoltage protection, undervoltage protection
Protection	Cooling with fans, air convection
Cooling System	96KHz signal sampling frequency, 24bit precision
DSP	
Processor	1×NEUTRIK® female XLR 1×NEUTRIK® male XLR Power connector
Output / Input	100V-240V 50Hz (60Hz)
Signal Input / Output	CNC made of Russian birch plywood
Power Input / Output	620X338X465mm
Working Voltage	33.0Kg
Cabinet	
Cabinet Material	
Dimension (W×H×D)	
Net Weight	



WM212-DSP

Frequency Response	45Hz-20KHz
Maximum Calculated SPL/1M	136dB
LF Driver	Customized Audiocenter ferrite driver, 3"voice coil
HF Driver	Customized Beyma ferrite driver, 1.4"exit, 3"voice coil
Coverage Angle (Symmetrical)	60° x 40° (Live band), 60° x 60° (Stage)
AMPLIFIER	Class D
Amplifier Circuitry	1600W
Power (RMS)	20Hz-20KHz(±0.5dB)
Frequency Response	DC protection, short circuit protection, overheat protection, input overload protection, output overload protection, soft startup protection, overvoltage protection, undervoltage protection
Protection	Cooling with fans, air convection
Cooling System	96KHz signal sampling frequency, 24bit precision
DSP	
Processor	1×NEUTRIK® female XLR 1×NEUTRIK® male XLR Power connector
Output / Input	100V-240V 50Hz (60Hz)
Signal Input / Output	CNC made of Russian birch plywood
Power Input / Output	700X347X515mm
Working Voltage	40.0Kg
Cabinet	
Cabinet Material	
Dimension (W×H×D)	
Net Weight	